

Premixed Protein Marker (Low)

Code No. 3595A Size: 500 μ l

Description:

Premixed Protein Marker (Low) consists of six different thermally denatured proteins with molecular weights between 14.3 kDa and 97.2 kDa. The amount of each protein is normalized to yield uniform band intensities when this marker is analyzed by SDS-PAGE and stained with Coomassie Brilliant Blue R-250. This marker contains 0.6 μ g of protein per microliter. Five μ l of this marker is loaded per lane of an SDS-PAGE minigel for standard use, providing sufficient marker for 100 lanes.

Component:

Premixed Protein Marker (Low) 500 μ l

Storage: -20°C

Proteins:

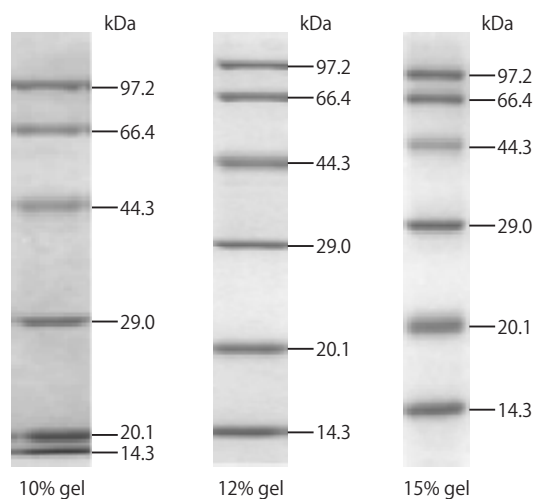
Proteins	Origin	MW (Da)
Phosphorylase B	Rabbit muscle	97,200
Serum Albumin	Bovine	66,409
Ovalbumin	Hen egg white	44,287
Carbonic anhydrase	Bovine	29,000
Trypsin inhibitor	Soybean	20,100
Lysozyme	Hen egg white	14,300

Note:

It is recommended to use a 10% - 15% SDS-polyacrylamide gel for electrophoresis. If the gel concentration is too low, then low molecular weight bands may migrate faster than BPB. If the gel concentration is too high, then higher molecular weight bands may not separate well.

Application Example:

1. Load 5 μ l of marker per lane of a 10% - 15% SDS-PAGE minigel.
2. After electrophoresis, stain the gel with Coomassie Brilliant Blue R-250.



Note

This product is for research use only. It is not intended for use in therapeutic or diagnostic procedures for humans or animals. Also, do not use this product as food, cosmetic, or household item, etc. Takara products may not be resold or transferred, modified for resale or transfer, or used to manufacture commercial products without written approval from Takara Bio Inc.

If you require licenses for other use, please contact us by phone at +81 77 565 6973 or from our website at www.takara-bio.com.

Your use of this product is also subject to compliance with any applicable licensing requirements described on the product web page. It is your responsibility to review, understand and adhere to any restrictions imposed by such statements.

All trademarks are the property of their respective owners. Certain trademarks may not be registered in all jurisdictions.