

Product Name: Broad Range OG 12 Colored Protein Ladder

Cat# and Pack size:

Cat#	Pack Size
3472	500 μ l

Product description:

The Broad Range OG 12 Colored Protein Ladder is a three-color protein standard with 12 pre-stained proteins covering a wide range molecular weights from 10 to 245 kDa. Proteins are covalently coupled with a blue chromophore except for two reference bands (one green and one red band at 25 kDa and 75 kDa respectively) when separated on SDS-PAGE (Tris-Glycine buffer). The Broad Range OG 12 Colored Protein Ladder is designed for monitoring protein separation during SDS-polyacrylamide gel electrophoresis, verification of Western transfer efficiency on membranes (PVDF, nylon, or nitrocellulose) and for approximating the size of proteins. The ladder is supplied in gel loading buffer and is ready to use. Do not heat, dilute, add reducing agent before loading.

Storage:

- Stable for up to 2 weeks at 25°C
- Stable for up to 3 months at 4°C
- For long term storage, store at -20°C

Storage Buffer:

Approximately 0.1 - 0.4 mg/ml of each protein

20 mM Tris-phosphate (pH 7.5 at 25°C)

2% SDS

0.2 mM DTT

3.6 M Urea

15% (v/v) Glycerol

Application Example:

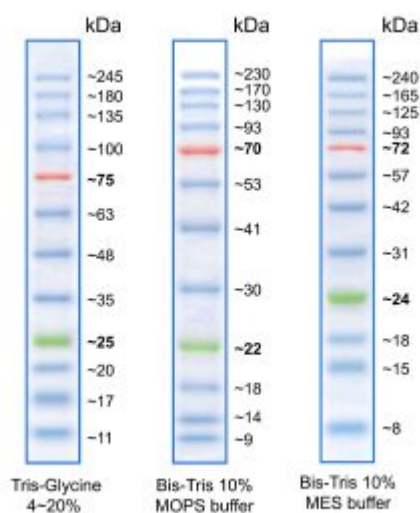
1. 3 μ l or 5 μ l per loading for clear visualization during electrophoresis on 15-well or 10-well mini-gel, respectively.
2. 1.5 - 2.5 μ l per well for general Western transferring.

3. Apply more for thicker (> 1.5 mm) or larger gel.
4. Recommended to load protein ladder directly on gel without preheating

Notes:

1. Thaw Broad Range OG 12 Colored Protein Ladder at room temperature.
2. Confirm the ladder is completely dissolved.
3. Pre-heating is not required.
4. Migration patterns of Broad Range OG 12 Colored Protein Ladder in different electrophoresis conditions are listed below.

* The apparent molecular weight of each protein (kDa) has been determined by calibration against an unstained protein ladder in each electrophoresis condition.



Notice: This product is for research use only. It is not intended for use in therapeutic or diagnostic procedures for humans or animals. Also, do not use this product as food, cosmetic, or household item, etc.

Takara products may not be resold or transferred, modified for resale or transfer, or used to manufacture commercial products without written approval from Takara Bio Inc.

If you require licenses for other use, please contact us from our website at store.dsstakarabio.com/

Your use of this product is also subject to compliance with any applicable licensing requirements described on the product web page. It is your responsibility to review, understand and adhere to any restrictions imposed by such statements.

All trademarks are the property of their respective owners. Certain trademarks may not be registered in all jurisdictions.

For enquiries:

Visit <https://store.dsstakarabio.com/> for more detailed product information

For more information contact directly below;

Address: DSS Takara Bio India Pvt Ltd, A-5 Mohan Co-operative, Industrial Estate, Mathura Road, New Delhi, Delhi 110044

Email: enquiries@dsstakarabio.com

Toll-Free number 1800-212-4922