



# DTI Low Range Coloured Protein Ladder



---

Instruction Manual for use

User Manual for DTI Low Range Coloured Protein Ladder

Catalogue number: DT2501.100

*Note: Applicable to all pack sizes*

Manufactured by  
DSS Takara Bio India Pvt Ltd  
A-5 Mohan Co-operative, Industrial Estate,  
Mathura Road, New Delhi, Delhi 110044

**1) Product Description:**

DTI Low Range Coloured Protein Ladder is a three-color protein standard with 10 pre-stained proteins covering a wide range molecular weight for 10 to 180 kDa. Proteins are covalently coupled with a blue chromophore except for two reference bands (one green and one red band at 25 kDa and 75 kDa respectively) when separated on SDS-PAGE (Tris-glycine buffer). The Low Range OG 10 Colored Protein Ladder is designed for monitoring protein separated during SDS polyacrylamide gel electrophoresis, verification of Western transfer efficiency on membranes (PVDF, nylon or nitrocellulose) and for approximate sizing of proteins. The ladder is supplied in gel loading buffer and is ready to use. Do not heat, dilute, add reducing agent before loading.

**2) Storage Buffer :**

Each protein	Approximately 0.2 - 0.4 mg/ml
Tris-phosphate (pH 7.5 at 25°C)	20 mM
SDS	2%
DTT	0.2 mM
Urea	3.6 M
Glycerol	15% (v/v)

**3) Storage :**

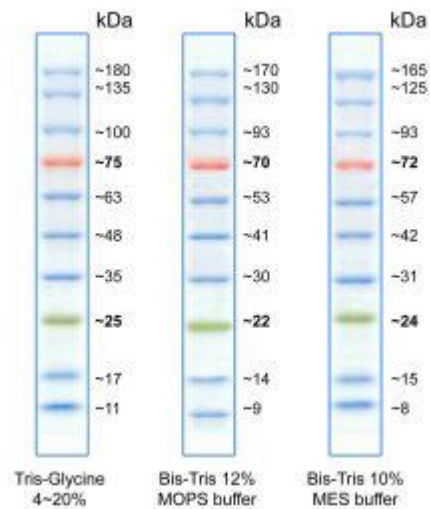
- Stable for up to 2 weeks at 25°C
- Stable for up to 3 months at 4°C
- For long term storage, store at -20°C

**4) Application Example**

- 3 µl or 5 µl per loading for clear visualization during electrophoresis on 15-well or 10-well mini-gel, respectively.
- 2 - 3 µl per well for general Western transferring.
- Apply more for thicker (>1.5 mm) or larger gel.
- Recommended to load protein ladder directly on gel without preheating.

**Notes:**

- Thaw **Low Range Coloured Protein Ladder** at room temperature.
- Confirm the ladder is completely dissolved.
- Pre-heating is not required.
- Migration patterns of Low Range Colored Protein Ladder in different electrophoresis conditions are listed below:
  - \* The apparent molecular weight of each protein (kDa) has been determined by calibration against an unstained protein ladder in each electrophoresis condition.



**Notice:** This product is for research use only. It is not intended for use in therapeutic or diagnostic procedures for humans or animals. Also, do not use this product as food, cosmetic, or household item, etc.

Visit <https://store.dsstakarabio.com/pages/dti-low-range-coloured-protein-ladder> for more detailed product information






For more information contact directly below;

Address: DSS Takara Bio India Pvt Ltd, A-5 Mohan Co-operative, Industrial Estate, Mathura Road, New Delhi, Delhi 110044

Email: [enquiries@dsstakarabio.com](mailto:enquiries@dsstakarabio.com)

Toll-Free number 1800-212-4922

#### Description of Symbol Used:

-  Catalogue number
-  Batch Code
-  Date of Manufacturing
-  Use-by-date
-  Contains sufficient for <n> tests