



DTI 100 bp DNA ladder (dye plus)



Instruction Manual for use

User Manual for DTI 100 bp DNA ladder (dye plus)

Catalogue number: DT1801.100

Note: Applicable to all pack sizes

Manufactured by
DSS Takara Bio India Pvt Ltd
A-5 Mohan Co-operative, Industrial Estate,
Mathura Road, New Delhi, Delhi 110044

1) Product Description:

This marker consists of 10 fragments between 100 bp and 1,000 bp in multiples of 100 bp and an additional fragment at 1,500 bp. The 500 bp band containing triple the mass of the other fragments, serves as a visible reference indicator; all other fragments appear with equal intensity on the gel. They are all double-stranded DNA fragments.

Since this product is premixed with loading dyes and glycerol, it is possible to apply this product to agarose gel electrophoresis directly.

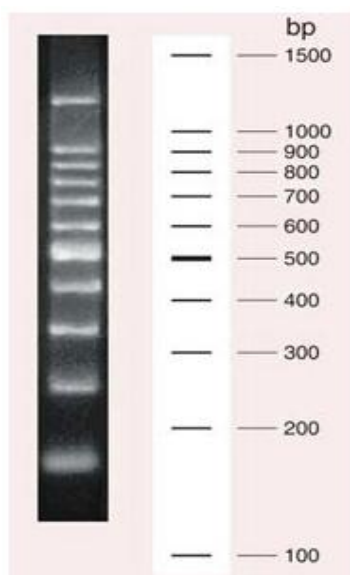


Figure1: Electrophoresis run on 3 % Agarose gel

2) Storage

-20°C

Once thawed, this product should be stored at 4°C. Avoid freeze-thaw cycles.

* 2 years from date of receipt when unused and stored properly at -20°C. Once opened or thawed, store at 4°C and use earlier avoiding contamination.

3) Components

Components	Cat# DT1801.100
DTI 100 bp DNA ladder (dye plus)	100 lanes

4) Form:

10 mM	Tris-HCl, pH 8.0
1 mM	EDTA
6%	Glycerol
0.1%	SDS
0.005%	Bromophenol Blue

5) Usage:

Used as a DNA molecular size marker in agarose gel electrophoresis.

6) Application example:

Apply 5 µl of DNA Ladder on agarose gel. Run agarose gel electrophoresis using DTI agarose routine (cat# DT1701.500). Perform staining with EtBr or an equivalent intercalator dye.

Visit <https://store.dsstakarabio.com/> for more detailed product information






For more information contact directly below;

Address: DSS Takara Bio India Pvt Ltd, A-5 Mohan Co-operative, Industrial Estate, Mathura Road, New Delhi, Delhi 110044

Email: enquiries@dsstakarabio.com

Toll-Free number 1800-212-4922

Description of Symbol Used:

-  Catalogue number
-  Batch Code
-  Date of Manufacturing
-  Use-by-date
-  Contains sufficient for <n> tests