



# DTI 1 kb DNA ladder (dye plus)



---

Instruction Manual for use

User Manual for DTI 1 kb DNA ladder (dye plus)

Catalogue number: DT1802.100

*Note: Applicable to all pack sizes*

Manufactured by  
DSS Takara Bio India Pvt Ltd  
A-5 Mohan Co-operative, Industrial Estate,  
Mathura Road, New Delhi, Delhi 110044

### 1) Product Description:

This marker consists of 10 fragments between 1 kb and 10 kb in multiples of 1 kb. The 5 kb fragment is brighter than the other fragments and serves as a visible reference indicator. They are all double-stranded DNA fragments.

Since this product is premixed with loading dyes and glycerol, it is possible to apply this product to agarose gel electrophoresis directly.

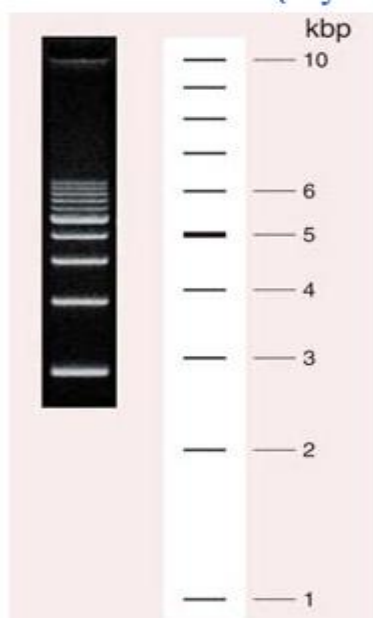


Figure1: Electrophoresis run on 1 % Agarose gel

### 2) Storage

-20°C

Once thawed, this product should be stored at 4°C. Avoid freeze-thaw cycles.

\* 2 years from date of receipt when unused and stored properly at -20°C. Once opened or thawed, store at 4°C and use earlier avoiding contamination.

### 3) Components

Components	Cat# DT1802.100
DTI 1 kb DNA ladder (dye plus)	100 lanes

### 4) Form:

10 mM	Tris-HCl, pH 8.0
6 mM	EDTA
6%	Glycerol
0.0083%	Bromophenol Blue
0.0033%	Xylene Cyanol

**5) Usage:**

Used as a DNA molecular size marker in gel electrophoresis.

**6) Application example:**

Apply 5 µl of DNA Ladder on agarose gel. Run agarose gel electrophoresis using ex. 0.7 - 1% DTI Agarose routine (Cat. # DT1701.500) Perform staining with EtBr or an equivalent intercalator dye.

Visit <https://store.dsstakarabio.com/> for more detailed product information






For more information contact directly below;

Address: DSS Takara Bio India Pvt Ltd, A-5 Mohan Co-operative, Industrial Estate, Mathura Road, New Delhi, Delhi 110044

Email: [enquiries@dsstakarabio.com](mailto:enquiries@dsstakarabio.com)

Toll-Free number 1800-212-4922

**Description of Symbol Used:**

-  Catalogue number
-  Batch Code
-  Date of Manufacturing
-  Use-by-date
-  Contains sufficient for <n> tests